



# Gilmerton House Corporate Hire

North Berwick, Scotland



## About Gilmerton House

A family home since the early 1600s, this historic mansion is open to guests who are looking to immerse themselves in the peaceful seclusion of the Scottish countryside.

Renowned for its rich history, privacy, and exceptional hospitality, Gilmerton House is the ideal location for corporate away days, executive board meetings and team building events on a private Georgian estate steeped in tradition.

With its close proximity to Edinburgh, versatile reception rooms, expansive gardens, luxurious accommodation and bespoke dining options, Gilmerton House is a popular choice for companies across Scotland and beyond, with a client list that has included Soho House, the PGA Tour, NBC Sports, Diageo, and the BBC.





REEN,

sinò ROO





## Features and Facilities

- Exclusive use of Gilmerton House and its 1000 acre private estate
- Optional accommodation can be taken for up to twenty guests across ten double bedrooms
- Optional use of Gilmerton Lodge, a charming cottage within the estate grounds with an additional three double bedrooms
- Impressive 17th century oak-panelled banquet room that can seat up to fifty people for private dinners, meetings and receptions
- Large ground floor dining room that can sit up to twenty people for a private dinner or meeting
- Four additional multifunctional reception and breakout rooms
- High speed fibre optic broadband throughout the property
- Boardroom set up with use of 60' smart TV monitor, flip charts, and Sonos sound system
- Breakout facilities including billiards room, table tennis, grand piano, board games and yoga mats
- BBQ grill, fire pits, garden games, 4km of woodland walking trails
- Six acre lawn for team building activities and larger scale events, and helicopter landing access
- Additional 450 sqm marquee footprint for corporate events
- Use of our new 220 yd driving range and practice area with golf clubs and range balls provided
- QR code access to our digital multimedia platform featuring a daily list of international newspapers, magazines, podcasts, and books
- Brand new catering kitchen and private guest kitchen with Aga, Nespresso machine and wine fridge

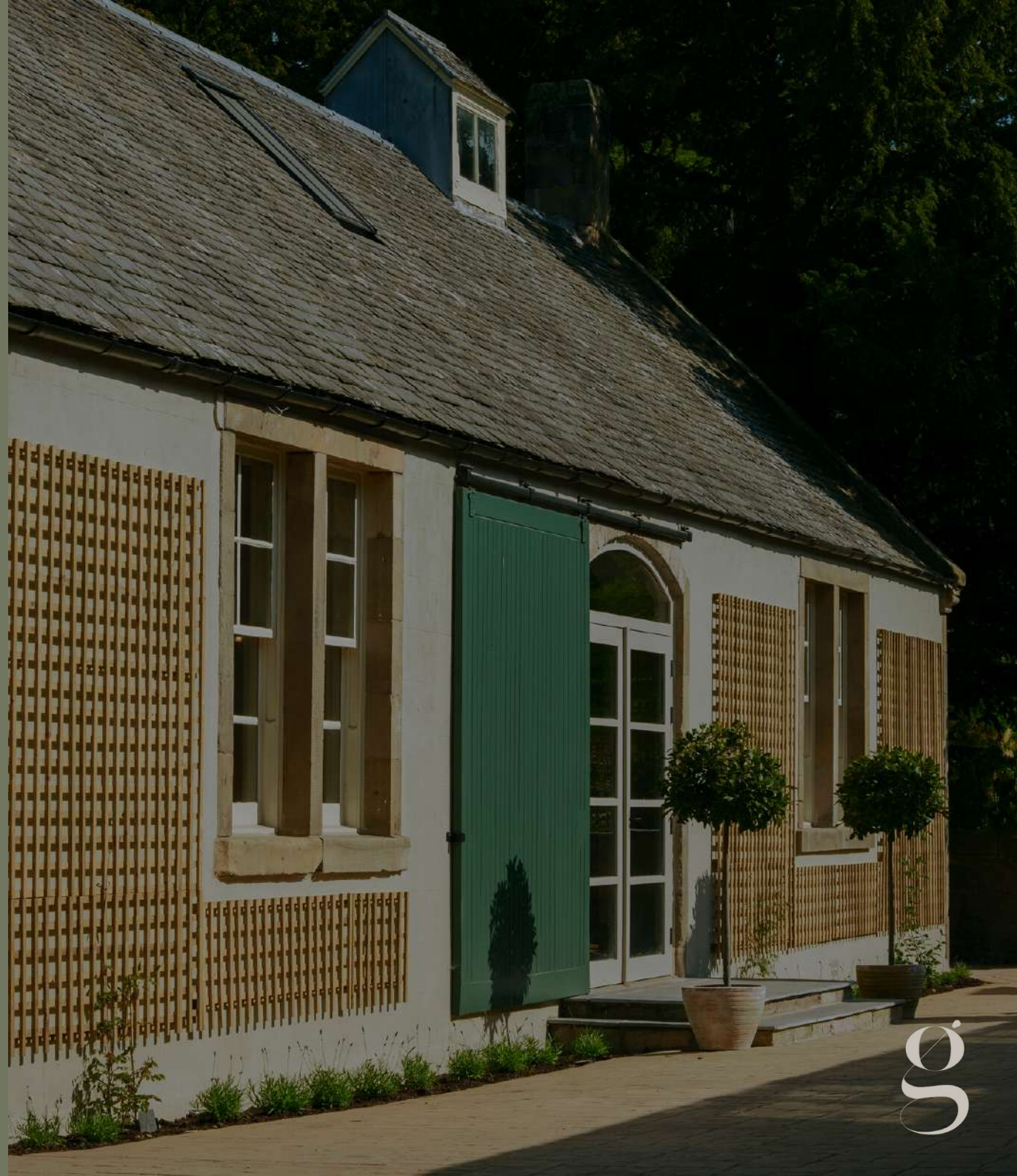




## The Laundry House

Originally built in 1804, The Laundry House has undergone a number of transformations since it functioned as the estate's laundry, although none quite as transformational as its recent renovation into an impressive blank canvas event space with charming rustic interiors and modern touches.

Accommodating up to 100 seated guests, The Laundry House, with its beamed roof, flagstone tiled floor, and beautiful outdoor terrace, is available either alongside or independently from the main house, and is the perfect venue for private events and dinners.







## Activities

With a wealth of indoor and outdoor spaces, Gilmerton House is a wonderful location to try experiential corporate bonding activities. From clay pigeon shooting to mini highland games, whisky tasting to archery, the team at Gilmerton are happy to help curate your perfect stay away from the office. Some of the optional activities we can help to coordinate for you include:

- Archery
- Clay Pigeon Shooting
- Falconry Displays
- Highland Games
- Foraging Walks
- Yoga Classes
- Quiz Evenings
- Christmas Parties
- Lectures & Exhibitions
- Private Concerts
- Casino Nights
- Whisky Tastings
- Wine Tastings
- Cookery & Cocktail Classes





## Food & Drink

From hearty Scottish breakfasts, luxury fridge fills, wood fired pizzas, and Asado grills to ten-course tasting menus with paired wines and craft beers, our culinary partners, [The Edinburgh Catering Company](#), will manage all of your food and drink requirements throughout your stay.

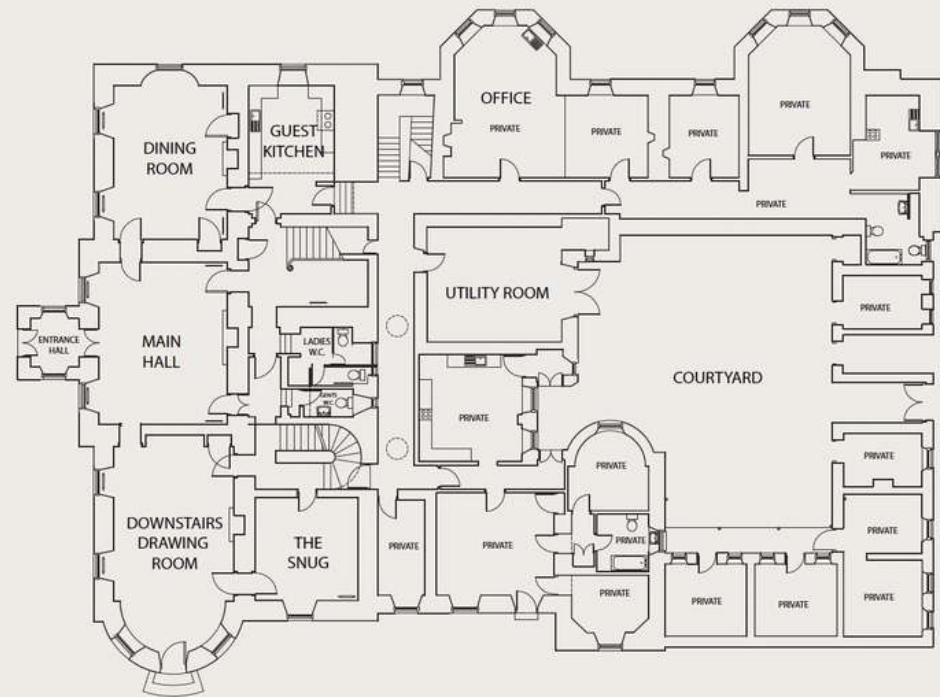
To ensure you enjoy world-class produce from across Scotland, our trusted local chefs will tailor a list of menus according to the exact tastes and requirements of your group.



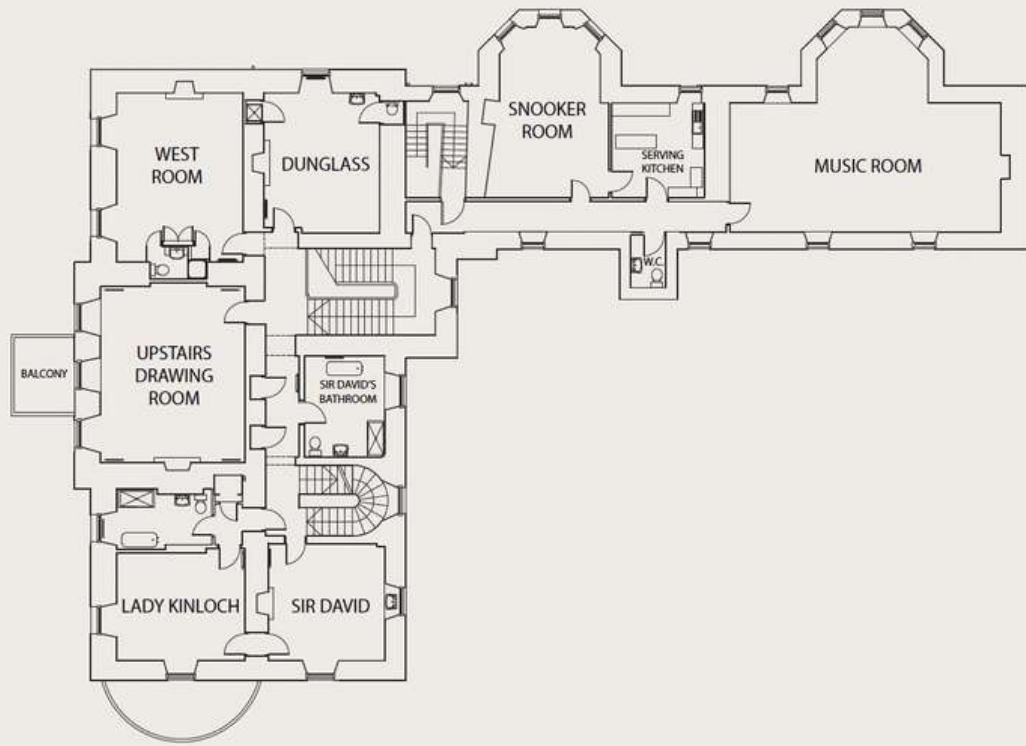




## Floor Plans

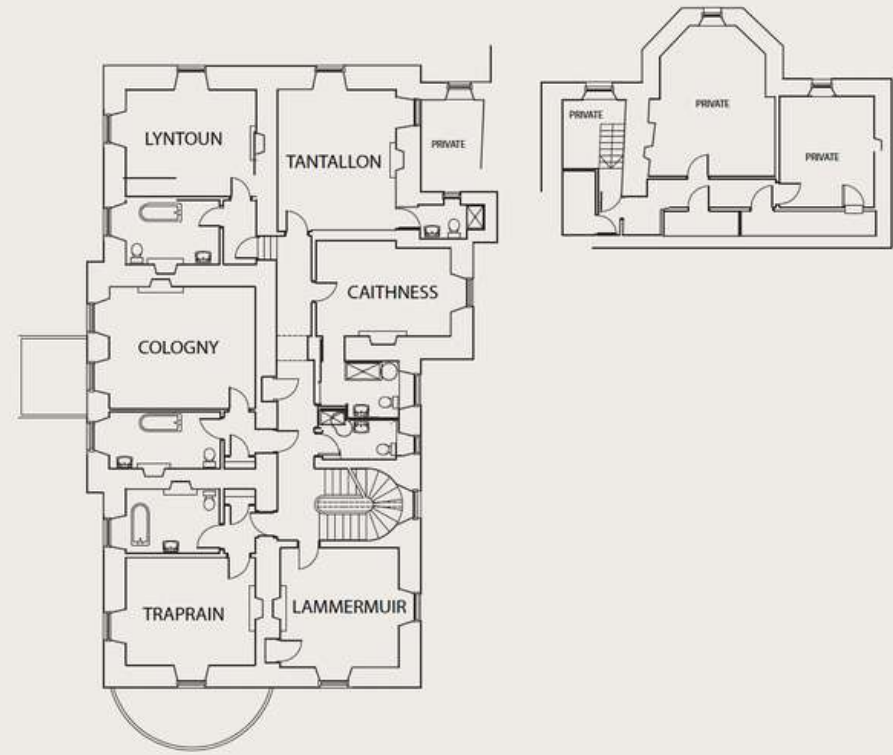


Ground Floor



First Floor





Second Floor



## Location

Located at the heart of Scotland's picturesque East Lothian countryside, Gilmerton House is only a thirty minute drive from Edinburgh city centre and forty minutes from Edinburgh Airport.

### Nearest Train Stations

- Edinburgh Waverly: 35 mins
- Drem: 5 mins
- East Linton: 5 mins
- Dunbar: 15 mins

### Nearest Airports

- Edinburgh Airport: 40 mins
- Glasgow Airport: 1hr 15
- Newcastle Airport: 1hr 45







g